

Brief PTC Report-Solomon Islands

Course Type: 2 day PTC Course
Course location: Kilu'ufi Hospital, Auki, Malaita Province, Solomon Islands
Course Dates: 24/02/2009 to 25/02/2009
Course Coordinator: Dr Kenton Ratu Sade
skenton@nrh.gov.sb or ks38026@gmail.com
Fax: (677) 24243

Instructors

<i>Name</i>	<i>Position</i>	<i>Hospital</i>
1. Dr Duddley Baerodo	Chief Surgeon-Solomon Islands	National Referral Hospital
2. Dr Flecture Kakai	EM-Trainee	National Referral Hospital
3. Dr Micky Olangi	Surgical-Trainee	National Referral Hospital
4. Dr Kenton Sade	Local PTC Coordinator	National Referral Hospital

What was good about the course?

1. This was the second PTC 2 Day Course to be held outside of Honiara, the first was in Gizo, Western Province.
2. Participants were from some of the most remote part of the province where transport difficulties has been challenging.
3. *"The course teach me lots of skills and how to manage trauma right, it gives me confidence"* Quote from a participant.
4. 76% of participants indicated that the best part of the 2 day course were the scenarios.

What could be improved? Recommendations for future course?

1. The lecture content depends on the type of audience, as in this case it includes Nurse Aides to Nursing instructor, so time is spent on explaining some of the principles so that participants can grasp it.
2. The scenarios in the instructor's manual are hospital and western countries type setting, scenarios must be more practical to suite the local setting as to bring it closer to home.
3. 70% of participants indicated time was too short, 2 days is not enough, most suggested 3-5 days so that they can grasp the principles more better.
4. Interactions between the instructors and participants especially during lectures, the more interaction the more lively the learning environment. This sort of improves especially after debriefing on the first day.
5. Language used, some instructors finds it hard to express some PTC principles in Solomon Pidgin, thus sticking to the English slides, but expressing in the most common day to language drives the message home.

Participants

Name	Gender	Designation	Clinic/Depart
1. Joyce Keratau	Female	RN	Afio AHC
2. Grace Iro	Female	RNA	Tarapiana
3. Tracy Babalu	Female	RNA	Kiluqifi Hospital
4. Salome Maheiro	Female	CN	Nafinua AHC
5. Larissa Katovai	Female	RN	Atoifi Hospital
6. Jane Wanefiolo	Female	CN	Maluqfi AHC
7. Fred Talomae	Male	RNA	Gwaunatolo RHC
8. Jim Baku	Male	RN	GOPD Kiluqifi Hospital
9. Dolson Alick	Male	RN	GOPD Kiluqifi Hospital
10. Brian Ngatu	Male	RN	GOPD Kiluqifi Hospital
11. Julius Hite	Male	RN	Afio AHC
12. David Fox	Male	RN	Auki AHC
13. David Nui	Male	RNA	Mamulele RHC
14. Rex Riki	Male	RNA	Takataka RHC
15. Timothy Manaka	Male	RN	GOPD Kiluqifi Hospital
16. William Baefua	Male	RN	Nafinua AHC
17. Kenny Moutoa	Male	RN	Atoifi Hospital
18. Ruth Anisi	Female	RNA	Ndai RHC
19. Everely Iio	Female	RN	Manawai RHC
20. Ben Chris Salo	Male	Nurse Tutor	Maluqfi NATS
21. Fr Michael Irotoa	Male	RNA	Fauabu RHC



Figure 1 PTC-Auki participants with their Certificates, February 24-25, 2009

Appendix 1 PTC-Auki 2 day Course Outline

PTC 2-Day Course, February 24th, 25th, 2009

Auki, Malaita province, Solomon Islands

DAY 1 – 24th February 2009

830-930	Welcome & Prayer Opening Speech by PHD Malaita Province PTC Local Coordinator Opening Remarks & Introduction Local Trauma Perspective MCQs	Kenton Steven Kenton Duddley Kenton
---------	--	---

930-1000 Morning Tea

1000-1030	ABCDE, Primary Survey	Flecture
1030-1100	Airways and Breathing	Micky
1100-1130	Circulation	Duddley
1130-1200	Skill Stations	Flecture
	Airway 1 Simple	Duddley
	Airway 2 Advanced	Kenton
	Cervical Spine & Log Roll	Micky
	Chest drain	

1230-1330 LUNCH

1330-1400	Demonstration Scenarios	All Instructors
1400-1515	Scenarios (five)	

1515-1530 Afternoon Tea

1530-1600	Secondary survey	Duddley
1600-1630	Chest Trauma	Micky
1630-1645	Day 1 Summary	Kenton

DAY 2- 25th February 2009

0830-0900	Abdominal, Pelvic and Limb Injuries	Kenton
0900-0930	Head and Spinal Injuries	Duddley
0930-1000	Paediatric and Obstetric Trauma	Flecture

1000-1030 Morning Tea

1030-1100	Burns	Micky
1100-1215	Workshops	Duddley
	Analgesia	Kenton
	Transportation	Flecture
	Paediatrics	Micky
	Neuro assessment	

1215-1315 LUNCH

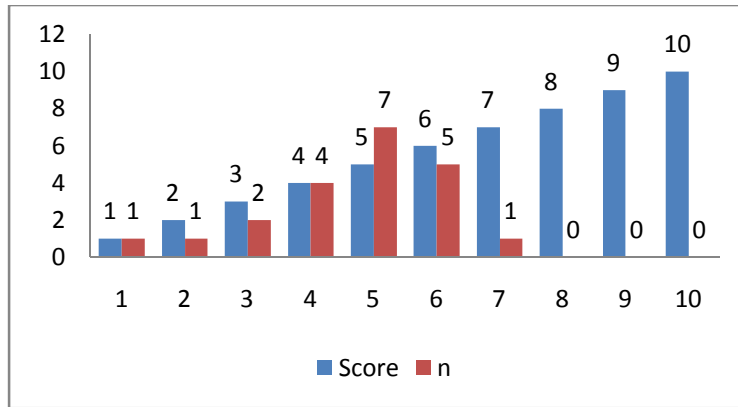
1315-1415	Disaster Management	Kenton
1415-1530	Scenarios	All Instructor

1530-1545 Afternoon tea

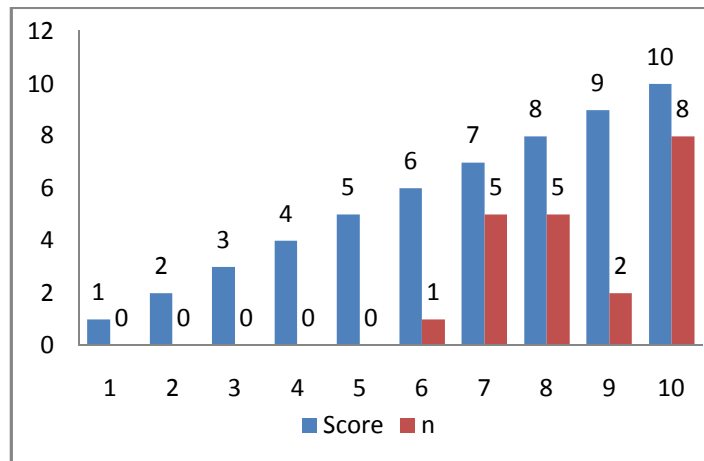
1545-1630	MCQs and discussion	Duddley
1630-1645	Feedback, Award of Certificates and close	Kenton

Appendix 2 MCQ Results

Graph 1: Pre-Course Test Result Distribution, PTC-Auki February 24-25, 2009



Graph 2: Post-Course Test Result Distribution, PTC-Auki February 24-25, 2009, Q1-10



Graph 3: Post-Course Test Result Distribution, PTC-Auki February 24-25, Q11-20

